



erika knight
BORN IN BRITAIN

Best of British - Erika's favourite designs

Introduction

This collection of handknit patterns stitches together some of my most favourite, tried and trusted designs that I have created with the Erika Knight yarn collection.

My signature style is one of simplicity, but the journey to achieve it is never straightforward. It involves thought, time, experimentation and sometimes frustration. Even after years of designing and honing my skills through experience, that creative spark can be elusive and hard graft. I always remind students that creativity is a process, not an event something that I have to remind myself too. I often describe that journey as like a little dog going around and round in its basket to find the perfect comfortable position. And that is me in my studio, usually late at night with the radio on, when I find I have my best ideas, surrounded by sketches and windings of yarn, secluded from the distractions of daylight hours and fuelled by copious cups of tea. I like to start the design process by swatching to see how a particular yarn behaves; the tension of the knitted fabric can be different depending on the desired finished result and I like to play around with the texture through stitch and experimenting with scale. Next I'll draw my garment ideas on paper, reviewing, refining and selecting as I go. There are some shapes and styles that I have returned to time and time again throughout my career. Having worked in the ready-to-wear side of the fashion and textile industry for many years on the high street and with design houses, I have learnt that classics are just that for good reason. For a design to be a success it has to fit and flatter the body, and when you wear it, I want you to feel comfortable and in control. Making your own clothes, slowly and methodically is a reaction against fast, disposable fashion and so much more than a necessity to clothe oneself. There is a real sense of pride in being able to create something by hand that is not only functional but beautiful too and of course it is essential that you enjoy the process along the way. My mantra is: buy less, knit more.

Erika x





About . Maxi Wool

Maxi Wool is a beautifully soft super chunky yarn, worsted spun to create a luxuriously voluminous yarn that takes colour extremely well. The palette is composed of colours that I know really do work - just the right red, the perfect 'green tone' yellow that has become a new neutral as it goes with just about everything and classic dark grey melange.

These designs are essential casual knits, patterns to return to every winter, simple to knit and easy to wear: a basic sweater, an oversized coat and the perfect weekend sweater with a little twist.

Yarn

Maxi Wool
100% British wool
Approx. 80m/87yds
100g/3oz hank





Passerby

A basic sweater worked in stocking stitch with K1, P1 ribs at hem, cuffs and neck. A ‘go to’ classic recipe to knit time and time again.



Yarn

Maxi Wool
 100% pure British wool
 Approx. 80m/87yds
 100g/3oz hank

Materials

Quantity: 5(5:6:6:7) x 100g hanks
 10mm/US 15 and 12mm/US 17 needles
 Stitch markers
 Stitch holders
 Large eyed blunt tipped sewing needle

Colour

Mulberry

Sizing

Model is UK size 8 and 5'10", wearing size small.



Measurements	XS	S	M	L	XL
Finished chest	86cm/34in	94cm/37in	104cm/41in	116cm/45½in	128cm/50½in
Length	49cm/19½in	51cm/20in	53cm/20¾in	55cm/21¾in	57cm/22½in
Sleeve length	43cm/17in	44cm/17¼in	44cm/17¼in	45cm/17¾in	45cm/17¾in



Traveller

A simply styled edge-to-edge oversized coat. Knitted in reverse stocking stitch (or the wrong side of stocking stitch), worked in one piece from the cast on edge to the armhole where it is divided to create the sleeves. With a rounded neckline perfect for layering, selvedge edge front bands and detailed with useful patch pockets and a simple raised knit stitch vertical line on the back. This is a classic and flattering shape for all body types.



Yarn

Maxi Wool
 100% British wool
 Approx. 80m/87yds
 100g/3oz hank

Materials

Quantity: 10(10:11:12) x 100g hanks
 10mm/US 15 circular needle length 100cm/40in
 Stitch holders
 Large eyed blunt tipped sewing needle

Colour

Chaos

Sizing

Model is UK size 8 and 5'10", wearing size medium.



Measurements	S	M	L	XL
Finished chest	165cm/65in	172cm/67 ³ / ₄ in	178cm/70in	188cm/74in
Length approx.	88cm/34 ³ / ₄ in	90cm/35 ¹ / ₂ in	92cm/36 ¹ / ₄ in	94cm/37in



Tuesday

My absolute favourite weekender piece; neat on the shoulder, slim in the sleeves, softly shaped through the body and with an elliptical hem, longer at the back and shorter at the front to layer over a staple white shirt and jeans.



Yarn

Maxi Wool
 100% British wool
 Approx. 80m/87yds
 100g/3oz hank

Materials

Quantity: 9(10:11:12) x 100g hanks
 10mm/US 15 needles
 10mm/US 15 circular needle
 Stitch markers
 Stitch holders
 Large eyed blunt tipped sewing needle

Colour

Chaos

Sizing

Model is UK size 8 and 5'5", wearing a size small.



Measurements	S	M	L	XL
Finished chest	90cm/35½in	100cm/39¼in	110cm/43¼in	120cm/47¼in
Length front	54cm/21¼in	58cm/22¾in	62cm/24½in	65cm/25¾in
Length back	69cm/27in	72cm/28¼in	77cm/30¼in	78cm/ 30¾in
Sleeve length underarm	48cm/19in	50cm/19¾in	50cm/19¾in	52cm/20½in



About . Wild Wool

Inspired by the wild hedgerows of the British countryside, this rustic yarn is a sustainable blend of soft wool and natural nettle. The fine, silk-like sliver that is spun from the fibre found inside the stem of the nettle plant has been collected and used in handcraft weaving for centuries. It is grown abundantly worldwide without the need for harmful pollutants nor pesticides, making it eco-friendly and sustainable. Blended with luxurious wool the nettle enhances the character of this yarn, to create a wonderfully soft and sheeny aran weight yarn. The palette is rich with colours dyed on a natural grey base to create intense bright melanges, classic tonal greys and beautifully subtle pale tones.

My designs in this yarn are comfortable and familiar so are named after places that have been my home. The knitted fabrics use the smooth side of stocking stitch and the reverse, more textural side. I like using both in combination within a garment for added textural interest. The reverse side of stocking stitch always looks a bit like garter stitch with its 'waves' but creates a much lighter weight fabric.

Yarn

Wild Wool

85% wool/15% nettle

Approx. 170m/186yds

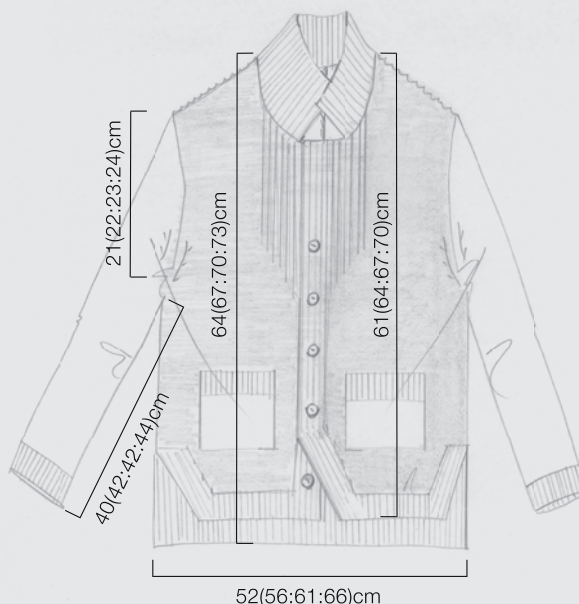
100g/3oz hank





Holyport Street

A classic jacket style cardigan, named after my childhood home, it uses both the reverse and smooth sides of stocking stitch. The button band is worked in with the fronts to avoid picking up stitches. The bottom of the button band is deliberately shaped to one side and has a non-working button and buttonhole to be a flattering detail over the widest part of the body.



Yarn

Wild Wool
85% wool/15% nettle
Approx. 170m/186yds
100g/3oz hank

Materials

Quantity: 6(7:8:9) x 100g hanks
5mm/US 8 needles
Stitch holders
5 buttons 20mm/1½in
Large eyed blunt tipped sewing needle

Colour

Wander

Sizing

Model is UK size 8 and 5'7", wearing a size medium.

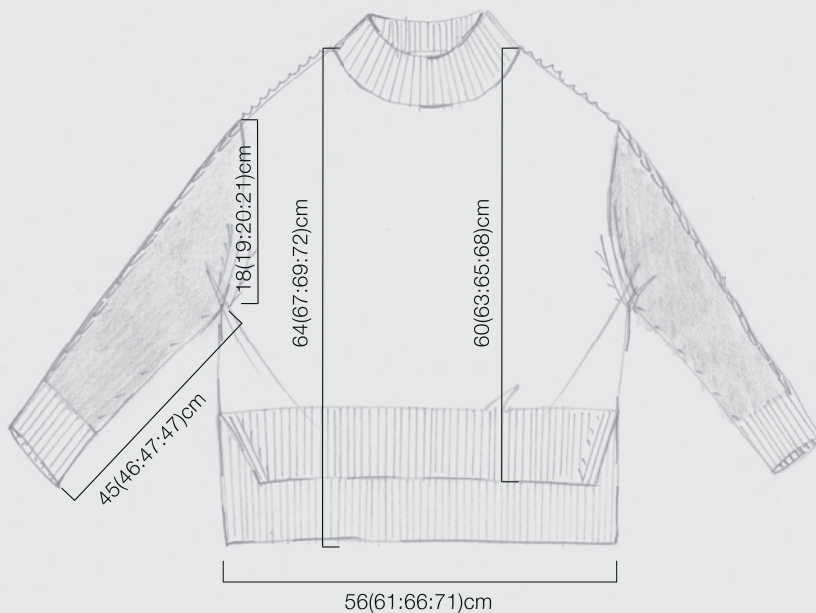


Measurements	S	M	L	XL
Finished chest	104cm/41in	112cm/44in	122cm/48in	132cm/52in
Length front	61cm/24in	64cm/25¼in	67cm/26¼in	70cm/27½in
Length back	64cm/25¼in	67cm/26¼in	70cm/27½in	73cm/28¾in
Sleeve length	40cm/15¾in	42cm/16½in	42cm/16½in	44cm/17¼in



Kemp Town

Named after the area of my favourite British seaside city, Brighton, where I have lived for the past twenty years, as it is comfortable and familiar just like this sweater. A ‘go to’ wide sweatshirt style, but with slim-ish sleeves and a longer back and shaped front hem. Again, knitted in complimentary fabrics of stocking stitch and reverse stocking stitch to provide textural interest over this basic shape.



Yarn

Wild Wool
85% wool/15% nettle
Approx. 170m/186yds
100g/3oz hank

Materials

Quantity: 6(6:7:8) x 100g hanks
5mm/US 8 needles
5mm/US 8 circular needle
Large eyed blunt tipped sewing needle

Colour

Mooch

Sizing

Model is UK size 8 and 5'7", wearing a size medium.



Measurements	S	M	L	XL
Finished chest	112cm/44in	122cm/48 ¹ / ₄ in	132cm/52in	142cm/56in
Length front	60cm/23 ³ / ₄ in	63cm/24 ³ / ₄ in	65cm/25 ³ / ₄ in	68cm/26 ¹ / ₂ in
Length back	64cm/25 ¹ / ₄ in	67cm/26 ¹ / ₄ in	69cm/27in	72cm/28 ¹ / ₄ in
Sleeve length	45cm/17 ³ / ₄ in	46cm/18in	47cm/18 ¹ / ₂ in	47cm/18 ¹ / ₂ in



Forest Hill

Having four brothers, I have always knitted for the boys in my life. This design had been a long-time favourite with a series of aran stitches with simple stitch and row repeats but I have revisited the design, creating a narrow rib yoke with fully fashioned shaping (a term borrowed from the traditional knitting industry) and a slimmer sleeve in rib that can be adjusted easily for a longer arm and folded back if necessary.



Yarn

Wild Wool
85% wool/15% nettle
Approx. 170m/186yds
100g/3oz hank

Materials

Quantity: 7(8:9:10) x 100g hanks
5mm/US 8 and 5.5mm/US 9 needles
5mm/US 8 circular needle
Cable needle
Stitch markers
Stitch holders
Large eyed blunt tipped sewing needle

Colour

Pootle

Sizing

Model is chest size 34in and 5'10", wearing a size medium.



Measurements	S	M	L	XL
Finished chest	106cm/41 ³ / ₄ in	112cm/44in	118cm/46 ¹ / ₂ in	124cm/48 ³ / ₄ in
Length	67cm/26in	69cm/27in	71cm/28in	73cm/28 ³ / ₄ in
Sleeve length	45cm/17 ³ / ₄ in	47cm/18 ¹ / ₂ in	47cm/18 ¹ / ₂ in	49cm/19 ¹ / ₂ in



About . British Blue 100

The artists of The Bloomsbury Group, who inspired the colour palette of this yarn and gave their names to the designs and yarn shades (Vanessa (Bell), Virginia (Woolf), Duncan (Grant) etc) painters, writers, poets and thinkers are fascinating to me and a constant source of creative inspiration. Considered outsiders in their time, living non-conventional lives their enormous creative output and distinctive decoration, colour and pattern have a huge influence on much of contemporary design, art and interiors as they oscillated between media, with originality and a fearless experimentation. This yarn is made from 100% British Bluefaced Leicester fleece, the finest wool that Britain produces with a subtle sheen and luxurious softness so that it can be worn next to the skin.

Yarn

British Blue 100

100% British Bluefaced Leicester wool

Approx. 220m/240yds

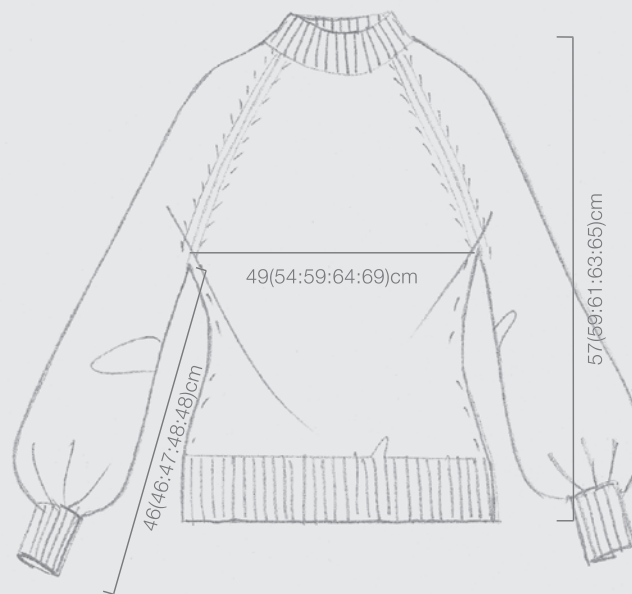
100g/3oz hank





Ottoline

A seemingly classic round neck sweater but with long sleeves with beautiful full cuffs, created with fully fashioned shaping to create a flattering detail for expressive hands.



Yarn

British Blue 100
 100% British Bluefaced Leicester wool
 Approx. 220m/240yds
 100g/3oz hank

Materials

Quantity: 6(6:7:7:8) x 100g hanks
 3.25mm/US 3 and 3.75mm/US 5 needles
 3.25mm/US 3 circular needle
 Stitch holders
 Large eyed blunt tipped sewing needle

Colour

Kanoko

Sizing

Model is UK size 8 and 5'8", wearing a size small.

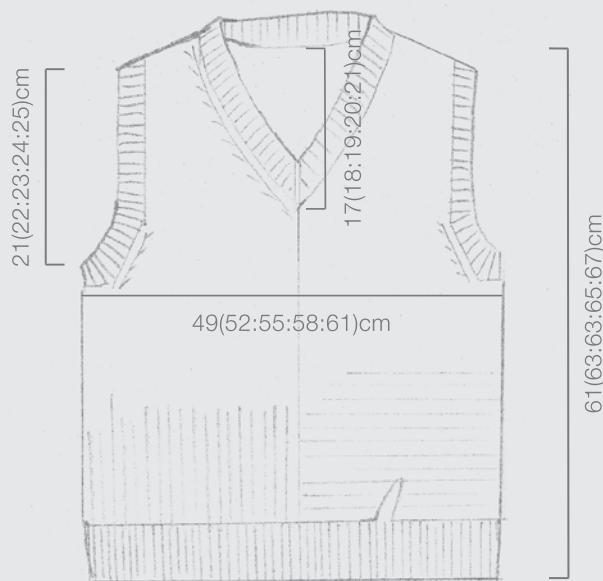


Measurements	XS	S	M	L	XL
Finished chest	98cm/38½in	108cm/42½in	118cm/46½in	128cm/50½in	138cm/54½in
Length	57cm/22½in	59cm/23¼in	61cm/24in	63cm/24¾in	65cm/25¾in
Sleeve length	46cm/18in	46cm/18in	47cm/18½in	48cm/19in	48cm/19in



Duncan

Named after an important male influence in the Charleston household (the Sussex country home of The Bloomsbury Group), a traditional pragmatic ‘v’ neck vest. A traditional staple garment in every gentleman’s everyday attire, this vest is updated with opposing lines of horizontal and vertical ribs. Once wet finished and blocked this design is a contemporary hero piece.



Yarn

British Blue 100
 100% British Bluefaced Leicester wool
 Approx. 220m/240yds
 100g/3oz hank

Materials

Quantity: 4(4:5:5:6) x 100g hanks
 3.75mm/US 5 and 4mm/US 6 needles
 3.75mm/US 5 circular needle
 Stitch holders
 Large eyed blunt tipped sewing needle

Colour

Cymbeline

Sizing

Model is chest size 34in and 5’8”, wearing a size small.

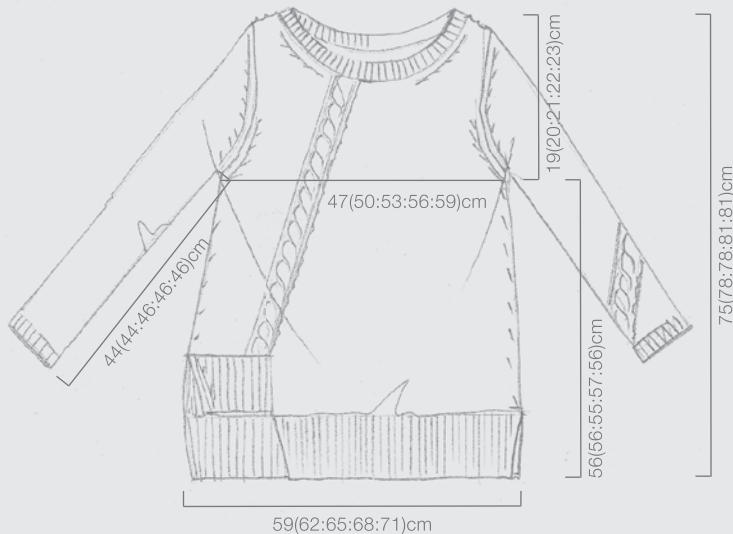


Measurements	XS	S	M	L	XL
Finished chest	98cm/38½in	104cm/41in	110cm/43½in	116cm/45½in	122cm/48in
Length	61cm/24in	63cm/24¾in	63cm/24¾in	65cm/25¾in	67cm/26¼in
Armhole depth	21cm/8¼in	22cm/8¾in	23cm/9in	24cm/9½in	25cm/10in



Virginia

Very much a favourite piece to design, knit and wear. A slightly 'A' line tunic style sweater with a wide soft neck that flatteringly sits just under the clavicle, but again designed for the eye to travel through the body by way of a single diagonal cable that starts from an asymmetrical hem. Further designed for comfort and distraction are the slim sleeves which feature a diagonal cable on just one sleeve to add interest when the arm is lifted to command immediate interest and attention. Obviously, this had to be named Virginia, a heroine piece.



Yarn

British Blue 100
 100% British Bluefaced Leicester wool
 Approx. 220m/240yds
 100g/3oz hank

Materials

Quantity: 6(6:7:7:8) x 100g hanks
 3.75mm/US 5 needles
 3.25mm/US 3 circular needle
 Cable needle
 Stitch markers
 Stitch holders

Colour

Clarissa

Sizing

Model is UK size 10 and 5'6", wearing a size medium.



Measurements	S	M	L	XL	XXL
Finished chest	94cm/37in	100cm/39½in	106cm/41¾in	112cm/44in	118cm/46½in
Length	75cm/29½in	78cm/30¾in	78cm/30¾in	81cm/32in	81cm/32in
Sleeve length	44cm/17¼in	44cm/17¼in	46cm/18in	46cm/18in	46cm/18in



About . Studio Linen

My favourite plant fibre, linen is an ancient, sustainable natural fibre spun from the stem of the flax plant. Flax itself requires no pesticides nor herbicides to grow and produces large amounts of usable fibre per acre without irrigation. 85% of Studio Linen is made from recycled linen fibres, sorted from selected wastage from the textile industry, regenerated and blended with premium linen grown in Belgium. A cool handfeel, delicate drape and excellent stitch definition make this yarn truly unique, and what's more it will just get better and better with wear, washing and age.

Yarn

Studio Linen

85% recycled linen/15% premium linen

Approx. 120m/131yds

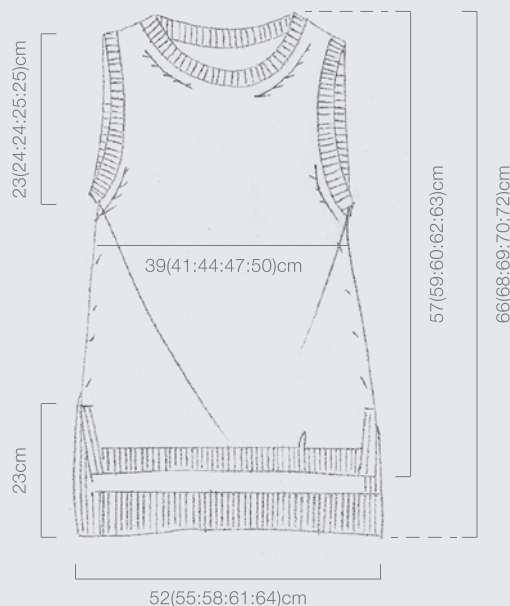
50g hank





Ravello

A sleeveless tunic knitted in stocking / stockinette stitch with contrast rib neck and armholes, side vent and longer back hem.



Yarn

Studio Linen
 85% recycled linen/15% premium linen
 Approx. 120m/13lyds
 50g hank

Materials

Quantity: 6(6:7:8:9) hanks
 3.25mm/US 3 and 3.75mm/US 5 needles
 Stitch holders
 Stitch markers
 Large eyed blunt tipped sewing needle

Colour

Velvet

Sizing

Model is UK size 8 and 5'6", wearing a size small.

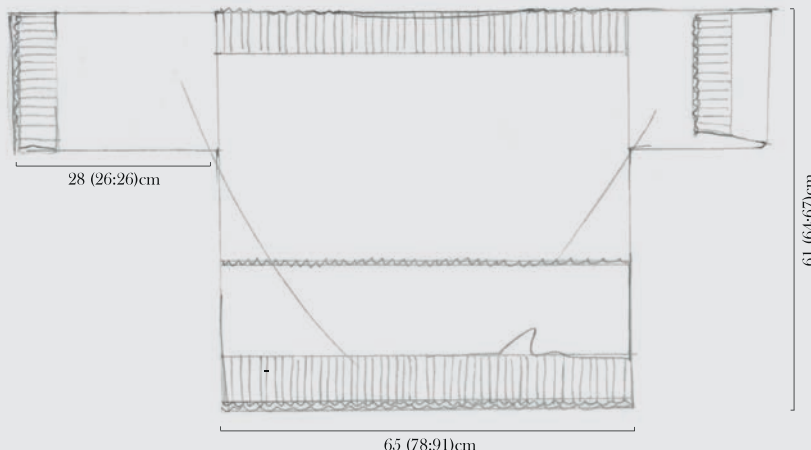


Measurements	S	M	L	XL	XXL
Finished chest	78cm/30 ³ / ₄ in	82cm/32 ¹ / ₄ in	88cm/34 ³ / ₄ in	94cm/37in	100cm/39 ¹ / ₂ in
Length front	57cm/22 ¹ / ₂ in	59cm/23 ¹ / ₂ in	60cm/23 ³ / ₄ in	62cm/24 ¹ / ₂ in	63cm/24 ³ / ₄ in
Length back	66cm/26in	68cm/26 ³ / ₄ in	69cm/27 ¹ / ₄ in	71cm/28in	72cm/28 ¹ / ₄ in
Armhole depth	23cm/9in	24cm/9 ¹ / ₂ in	24cm/9 ¹ / ₂ in	25cm/10in	25cm/10in



Minaret

Based on a ‘T’ shape, this casual, oversized sweater is inspired by traditional stitch textures, which have a subtle sophistication knitted in Studio Linen. Worked in the round to the armholes, then worked in rows. The sleeves are picked up and worked in the round to the cuff and fall just above the wrist.



Yarn

Studio Linen
 85% recycled linen/15% premium linen
 Approx. 120m/131yds
 50g hank

Materials

Quantity: 12(13:14) x 50g hanks
 3.75mm/US 5 circular needle – 80cm/32in and
 40cm/16in length
 Stitch marker
 Stitch holders
 Large eyed blunt tipped sewing needle

Colour

Souk

Sizing

Model is UK size 8 and 5’10”, wearing a size small.



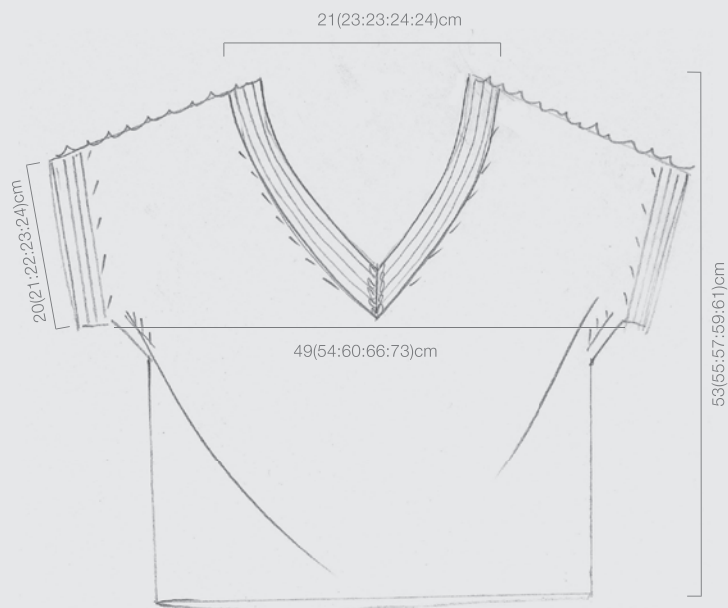
Measurements

	S	M	L
Finished chest	130cm/51in	156cm/61½in	182cm/71½in
Length	61cm/24in	64cm/24in	67cm/26¼in
Sleeve length	28cm/11in	26cm/10¼in	26cm/10¼in



Small Hours

A simple t-shirt style top with a little bit of added glam in the shape and detailing. Knitted in the round until the start of the armhole shaping, the short cap sleeves and double V neck (front and back) are then worked on two needles. A visible three needle cast off on the shoulder adds a ‘ready to wear’ finish and the lace and eyelet detail creates a pretty detail without being too fussy.



Yarn

Studio Linen
 85% recycled linen/15% premium linen
 Approx. 120m/131yds
 50g hank

Materials

Quantity: 6(6:7:8:8) x 50g hanks
 3.75mm/US 5 circular needle – 80cm/32 in length
 3.75mm/US 5 needles
 Stitch holders
 Stitch markers
 Large eyed blunt tipped sewing needle

Colour

Velvet

Sizing

Model is UK size 14 and 5’8”, wearing a size medium.



Measurements	S	M	L	XL	XXL
Finished chest	98cm/38½in	108cm/42½in	120cm/47¼in	132cm/52in	146cm/57½in
Length back	53cm/20¾in	55cm/21¾in	57cm/22½in	59cm/23¼in	61cm/24in



About . Gossypium Cotton

This 100% cotton yarn is made in India from natural cotton grown in the area surrounding the mill. A perfect 'double knit' weight, it is a 'go to' basic, reliable and hardwearing, but soft and with a non-chemical matt finish. These designs are everyday essentials, timeless and ageless like a great pair of classic denim jeans.

Yarn

Gossypium Cotton
100% cotton
Approx. 100m/109yds
50g ball





Picnic

The cricket sweater is a quintessential British summertime institution along strawberries and cream and a light rain shower. This version is an oversized parody of the British classic, with a longer back hem, deep ‘V’ neck, and asymmetric striped sleeves and neckband. Wear over anything (or nothing at all!) with an insouciant shrug.



Yarn

Gossypium Cotton
 100% cotton
 Approx. 100m/109yds
 50g ball

Materials

Quantity: 3(3) x 50g balls colour Daring (red)
 12(16) x 50g balls colour Milk (ecru)
 5(5) x 50g balls colour Pitch (black)
 3.75mm/ US 5 and 4mm/US 4 needles
 Stitch holders
 Cable needle
 Large eyed blunt tipped sewing needle

Colour

Daring, Milk and Pitch

Sizing

Model is UK size 8 and 5'8", wearing a size small-medium.



Measurements

	S - M	L - XL
Finished chest	126cm/49in	160cm/63in
Length back	80cm/31½in	84cm/33in
Length front	74cm/29in	78cm/30¾in
Sleeve length	43cm/17in	40cm/15¾in



Smith

A polo neck sleeveless vest knitted in stocking stitch and reverse stocking stitch with shaped side splits and selvedge rib details. Ideal for layering up over jersey basics, and cool enough to be worn in hotter temperatures.



Yarn

Gossypium Cotton
 100% cotton
 Approx. 100m/109yds
 50g ball

Materials

Quantity: 8(9:9:10:10) x 50g balls
 3.35mm/US 3 circular needle
 3.75mm/US 5 needles
 Stitch holders
 Stitch markers
 Large eyed blunt tipped sewing needle

Colour

Sea Fret

Sizing

Model is UK size 8 and 5'5", wearing a size small.



Measurements	S	M	L	XL	XXL
Finished chest	102cm/41in	108cm/42½in	114cm/44¾in	120cm/47¼in	126cm/49½in
Length front	58cm/22¾in	60cm/23¾in	62cm/24½in	64cm/25¼in	66cm/26in
Length back	65.5cm/26in	67.5cm/26½in	69.5cm/27¼in	71.5cm/28in	73.5cm/29in



Uniform

This design is based on one of my most popular handknits from my ready to wear label Molto! from the 1980s, and it looks just as good now. A sweatshirt style sweater knitted in sections of stocking stitch and reverse stocking stitch, with rib hem and cuffs and a simple roll back raw edge collar. I have always loved external seams and often turn things inside out to achieve this deconstructed, utilitarian look.



Yarn

Gossypium Cotton
 100% cotton
 Approx. 100m/109yds
 50g ball

Materials

Quantity: 14(15:15:16:16) x 50g balls
 3.75mm/US 5 needles
 Large eyed blunt tipped sewing needle

Colour

Pitch

Sizing

Model is chest size 34in and 5'9", wearing a size medium.



Measurements	S	M	L	XL	XXL
Finished chest	114cm/44 ³ / ₄ in	118cm/46 ¹ / ₂ in	122cm/48in	126cm/49 ¹ / ₂ in	130cm/51 ¹ / ₄ in
Length	65cm/25 ³ / ₄ in	68cm/26 ³ / ₄ in	71cm/28in	74cm/29in	77cm/30 ¹ / ₄ in
Sleeve length	42cm/16 ¹ / ₂ in	44cm/17 ¹ / ₄ in	46cm/18in	48cm/19in	50cm/19 ³ / ₄ in



About . Wool Local

The catalyst for creating my own yarn collection was to support the British heritage of textile mills and to promote native sheep breeds. And Wool Local does just that! Starting at the British wool auction in Bradford, the wool is scoured, combed, spun, dyed, steamed and hanked all within the Northern English county of Yorkshire. An intimate blend of luxurious Bluefaced Leicester and hardwearing Masham in a fine 4 ply weight.

Yarn

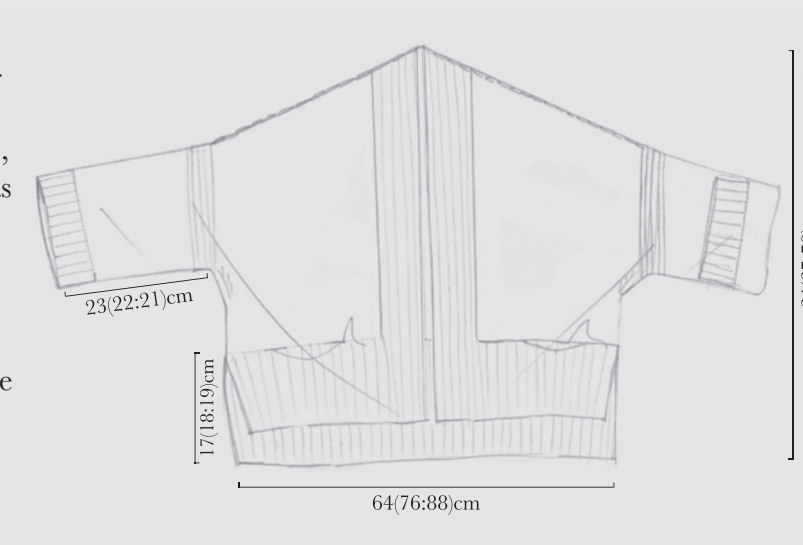
Wool Local
100% British wool
Approx. 450m/492yds
100g/3oz hank





Fettle

An absolute favourite shape – this edge to edge jacket is wide and boxy, with bracelet length sleeves and a slightly longer back hem to be perfectly flattering and easy to wear for all body shapes. This is knitted in stocking stitch and K2, P2 rib with two ends of the yarn held together as one to create a fuller, but still lightweight fabric. The back is worked from the bottom up with a deep K2, P2 rib and decorative rib stitch at the centre and armhole edges. The fronts have the same deep welt which conceals pockets and wide K2, P2 front bands.



Yarn

Wool Local
 100% British wool
 Approx. 450m/492yds
 100g/3oz hank

Materials

Quantity: 5(6:7) x 100g hanks (yarn held double)
 4.5mm/ US 7 needles
 Stitch markers
 Stitch holders
 Large eyed blunt tipped sewing needle

Colour

Ted

Sizing

Model is UK size 8 and 5'11", wearing size small.

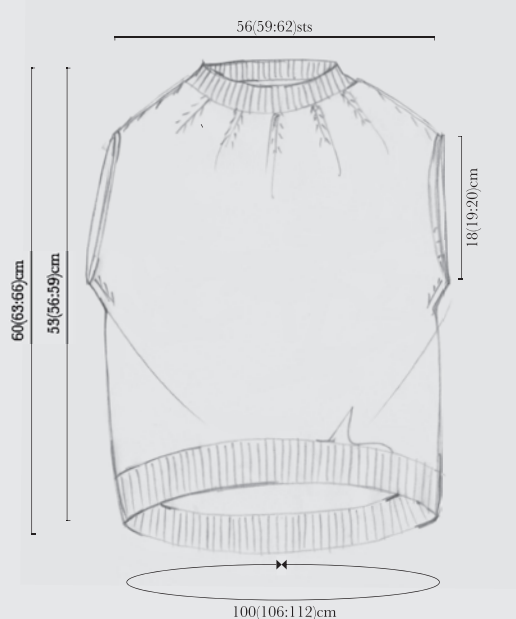


Measurements	S	M	L
To fit chest	82-87cm/32 ¹ / ₄ -34 ¹ / ₄ in	92-97cm/36 ¹ / ₄ -38in	102-107cm/40-42in
Finished chest	128cm/50 ¹ / ₂ in	152cm/59 ³ / ₄ in	172cm/67 ³ / ₄ in
Length at centre front	60cm/23 ³ / ₄ in	63cm/24 ³ / ₄ in	66cm/26in
Length at centre back	64cm/25 ¹ / ₄ in	67cm/26 ¹ / ₄ in	70cm/27 ¹ / ₂ in



Grimshaw

A refined, stylish round neck vest knitted seamlessly on circular needles with an elliptical hem and gathered yoke detail. Perfect for layering up or wearing underneath a neat tailored jacket (tweed to complete the British countryside look!) for warmth without bulkiness.



Yarn

Wool Local
 100% British wool
 Approx. 450m/492yds
 100g / 3oz hank

Materials

Quantity: 2(3:3) x 100g hanks
 2.75mm/US 2 circular needle
 3.25mm/US 3 circular needle
 Stitch holders
 Stitch markers
 Large eyed blunt tipped sewing needle

Colour

Cathy

Sizing

Model is UK size 8 and 5'11", wearing size small.



Measurements	S	M	L
To fit chest	82-87cm/32 ¹ / ₄ -34 ¹ / ₄ in	92-97cm/36 ¹ / ₄ -38in	102-107cm/40-42in
Finished chest	100cm/39 ¹ / ₂ in	109cm/43in	119cm/47in
Length at centre front	53cm/21in	56cm/22in	59cm/23 ¹ / ₄ in
Length at centre back	60cm/23 ³ / ₄ in	63cm/24 ³ / ₄ in	66cm/26in



Betty

A long scarf to be worn loose or lightweight enough to be tied closely around the neck for ultimate warmth. Knitted in four lacy stitch patterns and finished with a K1, P1 rib - a great way to try out some new stitches in a sampler stye. Worked on large needles to achieve its airy texture, this scarf uses just one hank of Wool Local.

Yarn

Wool Local
100% British wool
Approx. 450m/492yds
100g / 3oz hank

Materials

Quantity: 1 x 100g hank
5.5mm/US 9 needles
Cable needle
Large eyed blunt tipped sewing needle

Colour

Rosedale



Measurements

One size approx. 32cm/13in wide x 132cm/52in long.



Best of British - Erika's favourite designs



Where can you buy the patterns?

All designs in this look book are available as downloadable PDFs from the Erika Knight Ravelry Store.

www.ravelry.com/patterns/sources/best-of-british---erikas-favourite-designs



For a list of Erika Knight yarn collection stockists please visit

www.erikaknight.co.uk

www.erikaknight.co.uk

erika knight
BORN IN BRITAIN



erika knight
c/o Krenke Handelsges. mbH
Am Kanal 4
19372 Garwitz
GERMANY